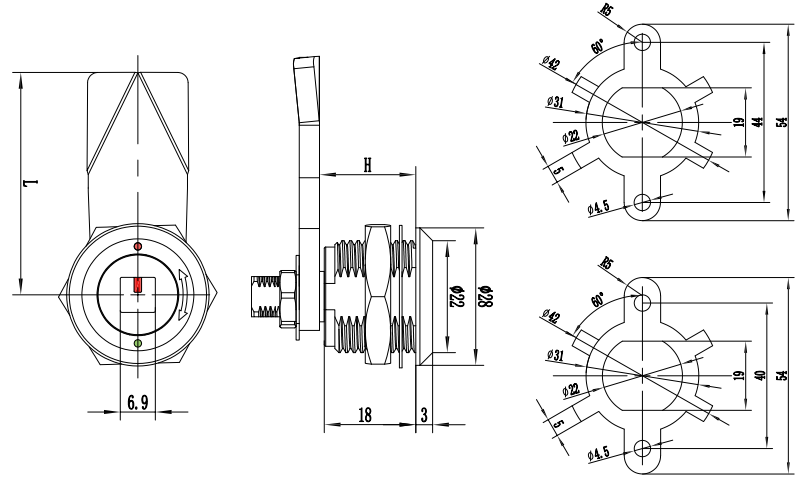




型号 (Model)
C2-1561



锁芯 Lock cylinder



非标定制锁芯见 P003-004
Non-standard custom lock cylinders refer to P003-004

选型 Selection

锁芯选型
Lock cylinder selection

C2-1561-SX-LH-A1L

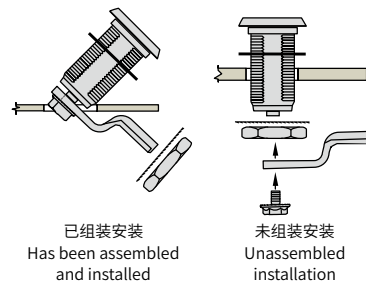
A1 代表 304 A2 代表 316
L 代表左锁 顺时针旋转锁紧
R 代表右锁 逆时针旋转锁紧
A1 stands for 304 A2 stands for 316
L stands for left lock, turn clockwise to lock
R stands for right lock, rotate counterclockwise to lock

L 代表锁舌中心距离 H 代表有效锁闭高度
L represents the center distance of the bolt
H represents the effective locking height

1. 材质与表面处理:
不锈钢 316 或 304
2. 性能参数:
解锁扭矩: 小于等于 0.79N/M
极限载荷: 700N
拉紧伸缩量: 5mm
防护等级: IP65
3. 安装说明:
固定小螺母扭矩 10N.M
固定螺母扭矩 17N.M
适用门板厚度: 1-8mm

1. Material and surface treatment:
Stainless steel 316 or 304
2. Performance parameters:
Unlocking torque: less than or equal to 0.79 N/M
Ultimate load: 700N
Tension and expansion: 5mm
Protection grade: IP65
3. Installation instructions:
Torque of small nut is 10N.M
Torque of fixing nut is 17N.M
Applicable thickness of door panel: 1-8mm

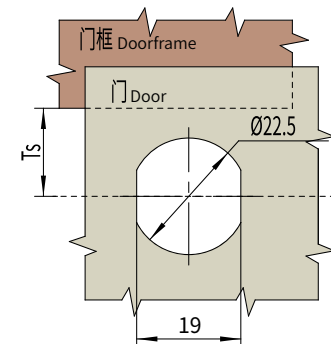
安装 Installation



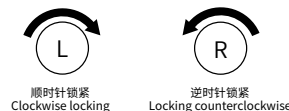
已组装安装
Has been assembled and installed

未组装安装
Unassembled installation

开孔 Cut out

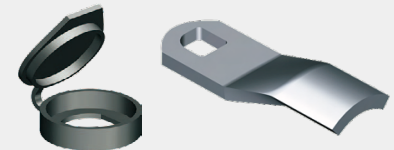


旋转 Whirl



顺时针锁紧
Clockwise locking

逆时针锁紧
Locking counterclockwise



防水盖参考 P204
锁片参考 P200~203

Waterproof cover P204.
Lock plate refer to P200~203.