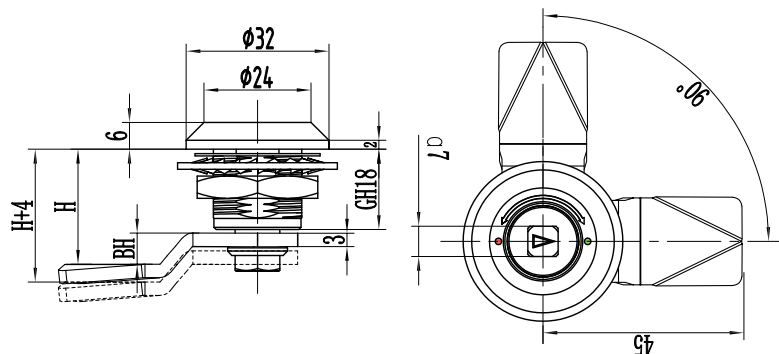




型号 (Model)

**C2-1520**



### 锁芯 Lock cylinder



238



347

非标定制锁芯见 P003-004

Non-standard custom lock cylinders refer to P003-004

### 选型 Selection

锁芯选型  
Lock cylinder selection

A1 代表 304 A2 代表 316

L 代表左锁 顺时针旋转锁紧

R 代表右锁 逆时针旋转锁紧

A1 stands for 304 A2 stands for 316

L stands for left lock, turn clockwise to lock

R stands for right lock, rotate counterclockwise to lock

**C2-1520-SX-LH-A1L**

L 代表锁舌中心距离 H 代表有效锁闭高度  
L represents the center distance of the bolt  
H represents the effective locking height

#### 1. 材质与表面处理:

不锈钢 316 或 304

#### 2. 性能参数:

解锁扭矩: 小于等于 0.79N/M

极限载荷: 700N

拉紧伸缩量: 4mm

防护等级: IP65

#### 3. 安装说明:

固定小螺母扭矩 10N.M

固定螺母扭矩 17N.M

适用门板厚度: 1-8mm

#### 1. Material and surface treatment:

Stainless steel 316 or 304

#### 2. Performance parameters:

Unlocking torque: less than or equal to 0.79 N/M

Ultimate load: 700N

Tension and expansion: 4mm

Protection grade: IP65

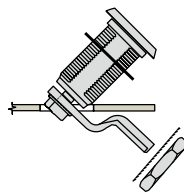
#### 3. Installation instructions:

Torque of small nut is 10N.M

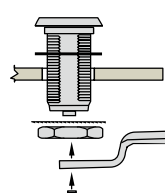
Torque of fixing nut is 17N.M

Applicable thickness of door panel: 1-8mm

### 安装 Installation

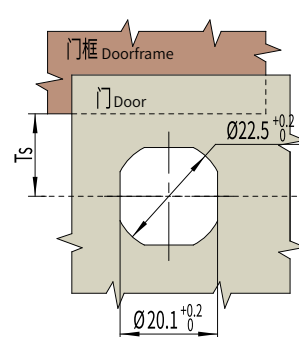


已组装安装  
Has been assembled  
and installed



未组装安装  
Unassembled  
installation

### 开孔 Cut out



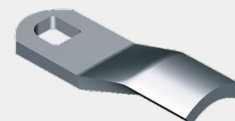
### 旋转 Whirl



顺时针锁紧  
Clockwise locking



逆时针锁紧  
Locking counterclockwise



锁片参考 P200~203 Lock plate refer to P200~203.